

Company Wide (5+ locations)

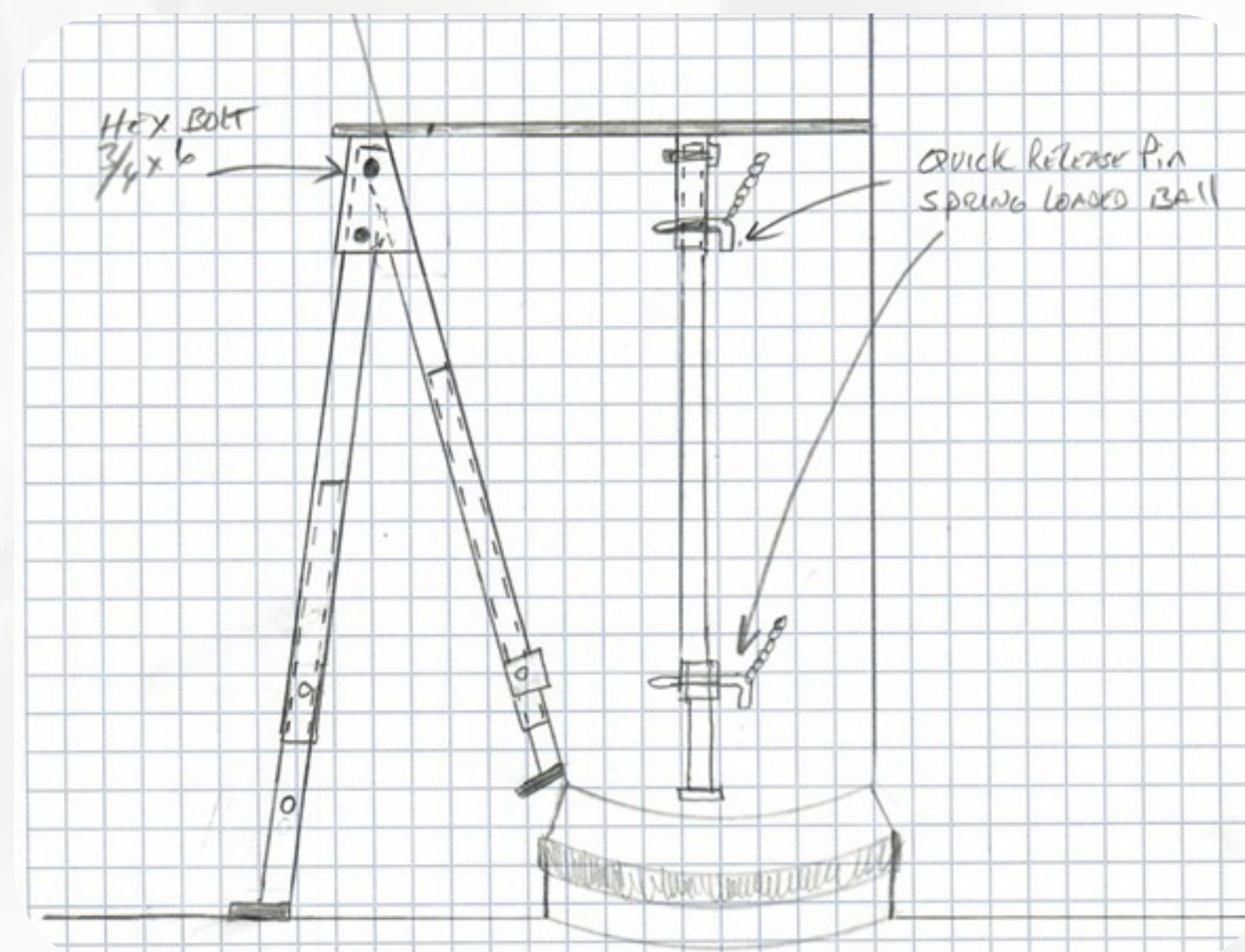
FES Form Support Legs

Description

Vertically poured Flared End Section molds can be very dangerous as they are top heavy and unbalanced while being poured. Rinker Materials machine shop in Colton CA came up with support leg retrofit design that fits on all the FES molds throughout the company. In order to maintain portability of the molds as they are often shared between plants, set of 4 telescopic support legs can be folded adjacent to the jacket when the mold is in the transportation mode.

Project Initiation

Rinker Materials Safety Department formed a task group to come up with ideas how to improve the safety of working with vertically poured FES forms.



Project Benefits

Having the safety legs on the vertical FES forms makes them much safer to work with, eliminating potentially fatal accidents.

