

ACPA PIPE SCHOOL –

JANUARY 31, 2024

ROBERT STRICKLAND

# GENERAL FLOOR AND YARD SAFETY



# INTRODUCTION

- Started in concrete in 2000 as a mixer driver
- Rebar Cut and Bend, Deliver Rebar, Concrete Lab Technician, Commercial Lab Technician (Soil and Asphalt), QC Manager, Safety Manager, Pipe Plant Production Manager.
- Safety Manager for 5 plants

## THE BIG IDEA...

- What does it mean to put safety first?
- Who is responsible for your safety?
- Who is responsible for their safety?

Safety slogans and signs don't save lives...

# WE DO!

# MANY OF THE BEST IDEAS ARE STOLEN...

- What have you learned about safety?
- What have you taught about safety?
- What will people remember about you when it comes to safety?
- What will people remember about safety when it comes to you?

# THE BASICS -

- PPE

- Hard Hat
- Safety Glasses
- Hearing Protection
- Hi Vis
- Gloves



# THE BASICS

- Boots
- OSHA 1910.136(a) – The employer shall ensure that each affected employee uses protective footwear when working in areas where there is a danger of foot injuries due to falling or rolling objects, or object piercing the sole...



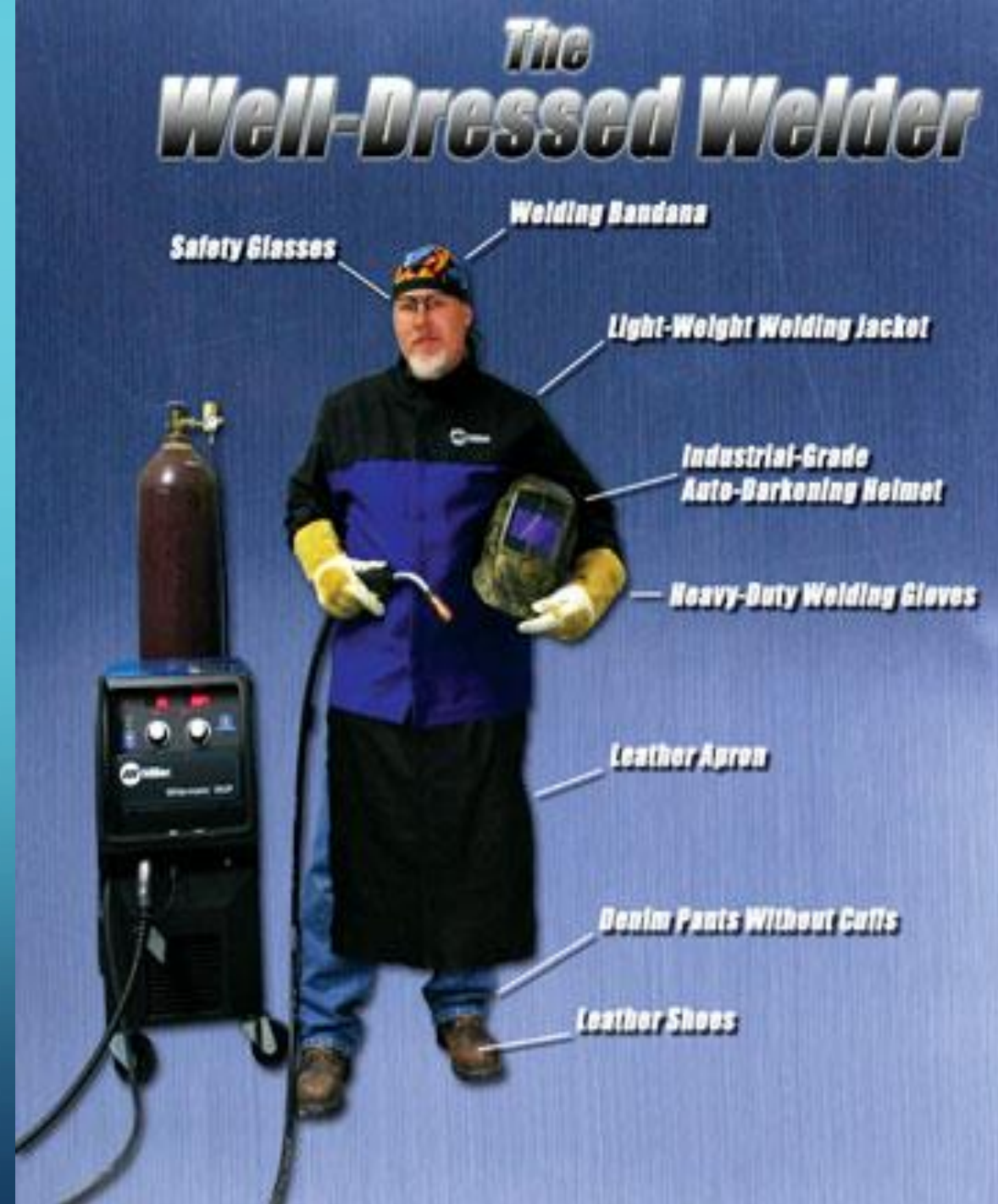
# THE BASICS

- Boots
  - Temporary Guards are just that... TEMPORARY.



# THE BASICS

- Specialty PPE
  - Face Shields
  - Chemical Gloves
  - Welding PPE



# The Well-Dressed Welder

- Welding Bandana
- Safety Glasses
- Light-Weight Welding Jacket
- Industrial-Grade Auto-Darkening Helmet
- Heavy-Duty Welding Gloves
- Leather Apron
- Denim Pants Without Cuffs
- Leather Shoes



# FLOOR SAFETY - KILN

07-24-2023 Mon 06:26:42



Camera 01

# FLOOR SAFETY

- Green Pipe



# FLOOR SAFETY

- Ladder Safety



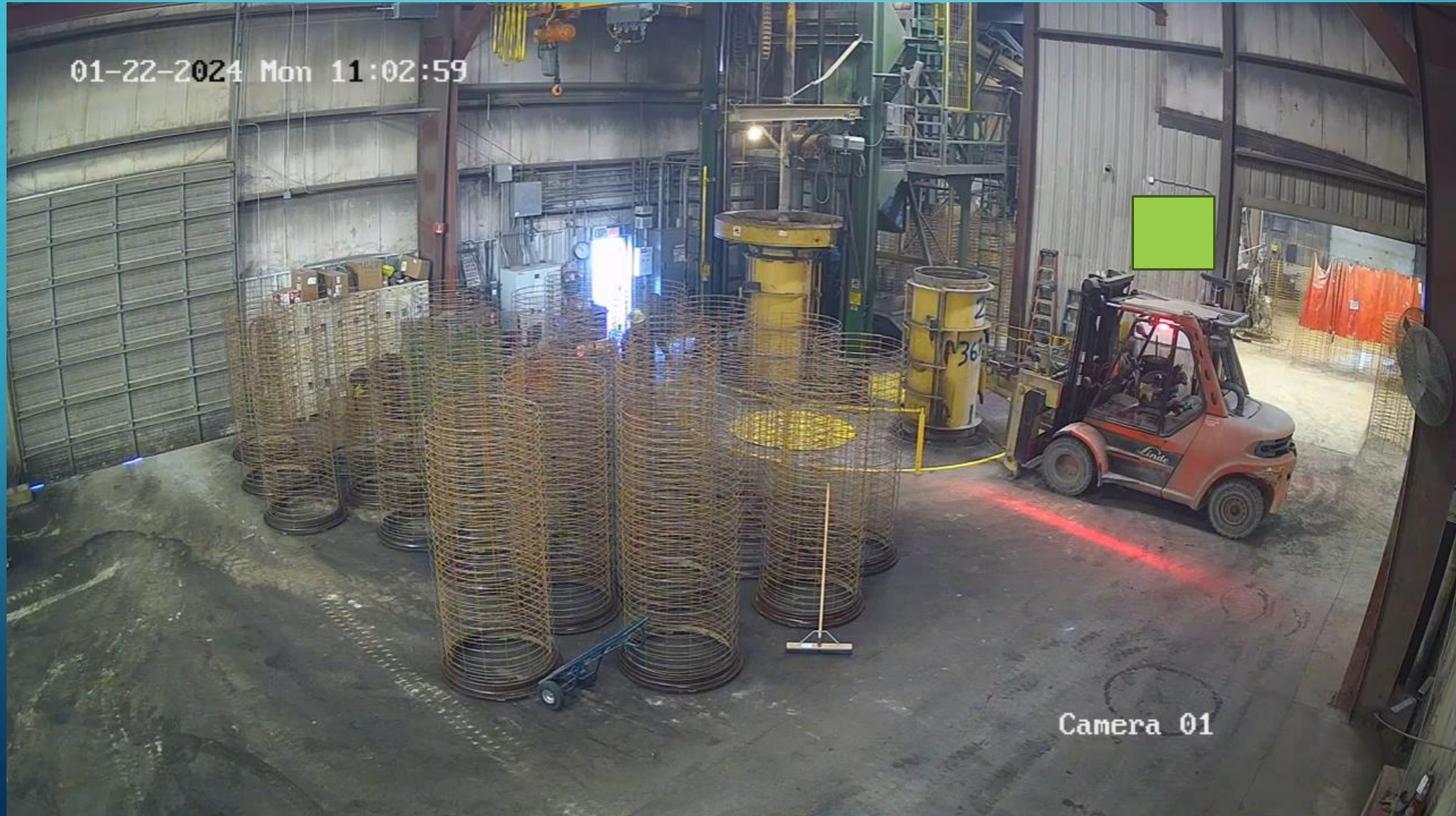
# FLOOR SAFETY

- Steam



# MACHINE SAFETY

- Forklift Traffic



# FLOOR SAFETY

- Moving Floors



# FLOOR SAFETY



# MACHINE SAFETY

- Open Holes





# MACHINE SAFETY

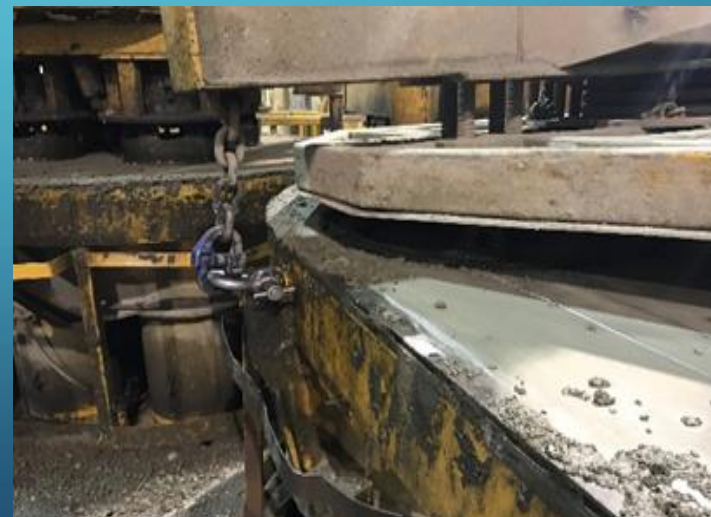
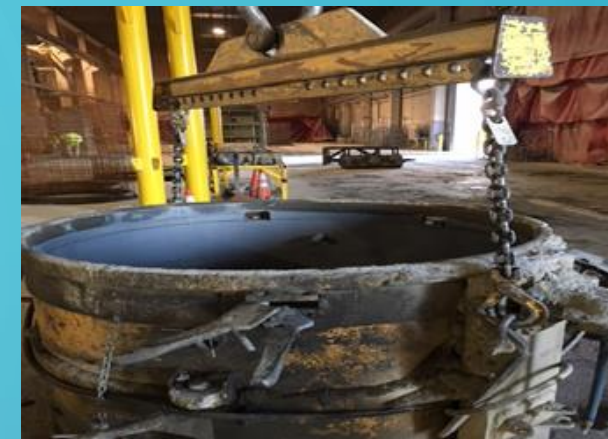
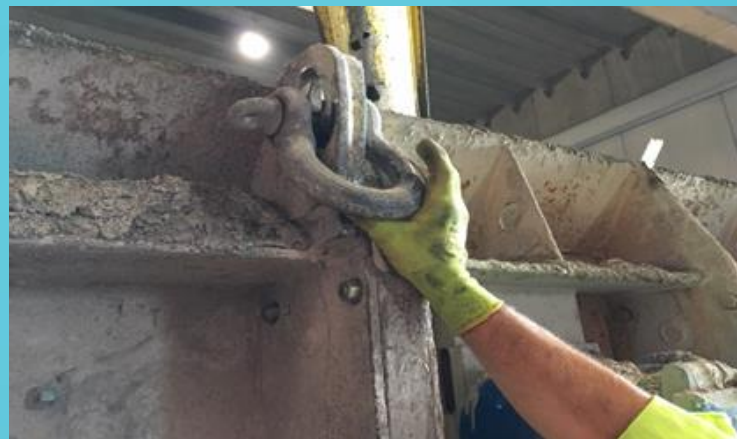
- Cranes
  - Suspended Loads



# SUSPENDED LOADS

- What is the minimum height for a suspended load?
- Examples?

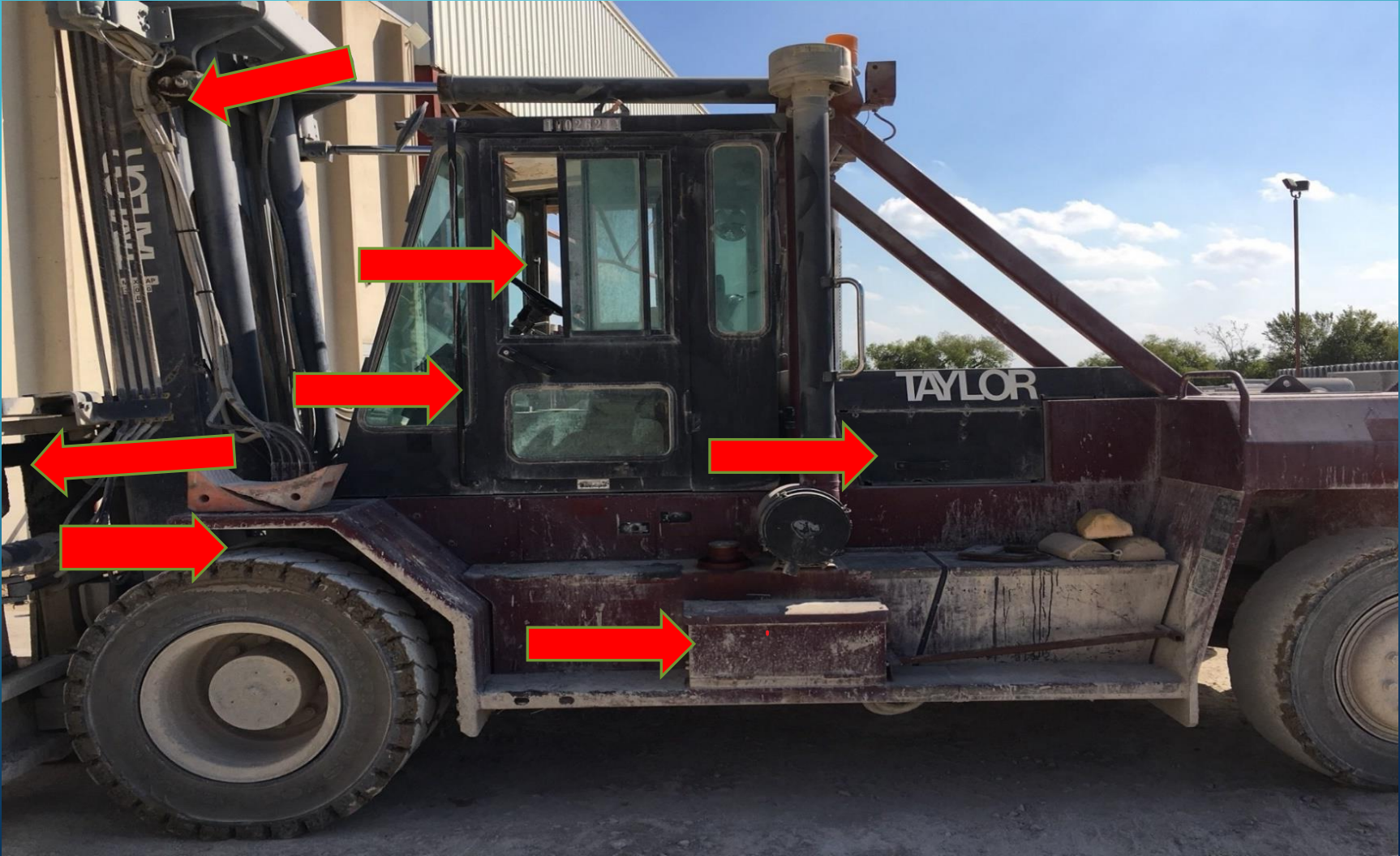
# PINCH POINTS



# PINCH POINTS



# PINCH POINTS



# MIXERS AND PITS

- Dangers



# YARD SAFETY

- Traffic



# YARD SAFETY

- Truck Loading





# YARD SAFETY

- Pipe Stacks



# YARD SAFETY

- Conveyors



# YARD SAFETY

- Aggregate Bins and Pits



# YARD SAFETY

- Silos



# YARD SAFETY



The background is a solid teal color. In the four corners, there are decorative white line-art elements resembling circuit traces or neural network connections. These elements consist of thin lines that branch out and terminate in small circles, creating a sense of connectivity and technology.

QUESTIONS?

THANK YOU ALL FOR ATTENDING!

# PS24: GENERAL PRODUCTION FACILITY SAFETY

---

